



Industrial and Hydraulic Hose & Fittings



Powell Industrial Guide Hydrovac & Waste Services

powellindustrial.com.au

CONTENTS

| | |
|--|----|
| OPTIMA® Kanamax AR180 Black Suction Hose | 4 |
| OPTIMA® PVC Tigertail Black/Yellow Hose..... | 4 |
| OPTIMA® SR Clear/Orange Suction Hose | 5 |
| OPTIMA® PVC Nitrile Blue Hose..... | 5 |
| EXITFLEX® PH623 Corrugated Bulk Material Handling Hose | 5 |
| OPTIMA® SCR PVC Nitrile Blue Black Hose | 5 |
| ExitFlex EF303 Water Jetting / Lateral Sewer Cleaning Hose - Green | 6 |
| ExitFlex EF303Y Water Jetting / Lateral Sewer Cleaning Hose - Yellow | 6 |
| ExitFlex EF308 Sewer Jetting Hose - Red | 6 |
| ExitFlex EF301 Sewer Jetting Hose - Orange | 7 |
| ExitFlex EF302 Sewer Jetting Hose - Blue..... | 7 |
| ExitFlex Pressure Washer Hose | 7 |
| Camlocks | 8 |
| Bauer Couplings..... | 10 |
| Brass Ball Valves..... | 11 |
| Travis Couplings..... | 11 |
| Pump Pro Valves | 11 |
| Nozzles and Guns..... | 12 |
| Nozzles - Hydrovac..... | 13 |
| Nozzles - Sewer | 14 |

WASTE & INDUSTRIAL HOSE



REINFORCEMENT: Black anti-shock rigid PVC helix.
INNER TUBE: Black smooth conductive SBR - abrasive resistant.
COVER: Black corrugated conductive SBR - abrasive resistant.
SAFETY FACTOR: 3:1

BRANDING: N/A
TEMPERATURE: -40°C to +60°C
ADVANTAGES:

- Light weight and flexible.
- Extremely abrasion resistant.
- Static dissipating with no grounding wire.
- Raised helix provides easy drag.

OPTIMA® Kanamax AR180 Black Suction Hose

The heavy duty abrasion resistance suction hose for vacuum trucks or handling abrasives such as crushed rock, sand, pea gravel, cement powder, dry fertiliser, iron ore and grains.

NB: Full vacuum in extreme high ground temperatures is not recommended, consult one of our helpful sales members for a more suitable product.

| Part Number | ID | Nom. OD | Working Pressure @ 20°C | | Weight | Vacuum Rating @ 20°C | | Bend Radius | Lengths |
|----------------|-----|---------|-------------------------|-----|--------|----------------------|-----|-------------|---------|
| | mm | mm | psi | bar | | in/Hg | mm | | |
| 10-845-038-030 | 38 | 46.2 | 45 | 3.1 | 0.55 | 29 | 51 | 30.5 | |
| 10-845-051-030 | 51 | 59.7 | 40 | 2.8 | 0.74 | 29 | 63 | 30.5 | |
| 10-845-063-030 | 63 | 74.9 | 35 | 2.4 | 1.31 | 29 | 63 | 30.5 | |
| 10-845-076-030 | 76 | 88.9 | 35 | 2.4 | 1.64 | 29 | 76 | 30.5 | |
| 10-845-102-030 | 102 | 117.6 | 30 | 2.1 | 2.63 | 29 | 114 | 30.5 | |
| 10-845-127-030 | 127 | 146.3 | 30 | 2.1 | 3.68 | 28 | 127 | 30.5 | |
| 10-845-152-030 | 152 | 170.9 | 30 | 2.1 | 4.58 | 28 | 234 | 30.5 | |
| 10-845-203-015 | 203 | 229.6 | 30 | 2.1 | 8.41 | 27 | 381 | 15.2 | |



REINFORCEMENT: Yellow rigid PVC helix.
INNER TUBE: Black smooth PVC/NBR - abrasive resistant
COVER: Black corrugated PVC/NBR - abrasive resistant.
SAFETY FACTOR: 3:1
BRANDING: N/A

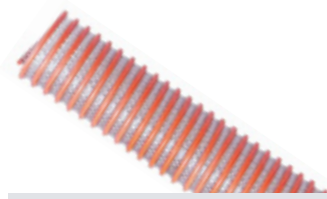
TEMPERATURE: -5°C TO +60°C
ADVANTAGES:

- Superior flexibility.
- Smooth abrasive resistant tube with chemical resistant characteristics.
- UV stabilised.

OPTIMA® PVC Tigertail Black/Yellow Hose

The blended formulation gives it a high flexibility at extremely low temperatures, the raised helix allows the hose to slide easily over rough surfaces making it ideally suited for the transfer of liquid waste from grease traps and other environmental collection facilities.

| Part Number | ID | Nom. OD | Working Pressure @ 20°C | | Weight | Vacuum Rating @ 20°C | | Bend Radius | Lengths |
|----------------|-------|---------|-------------------------|-----|--------|----------------------|-----|-------------|---------|
| | mm | mm | psi | bar | | in/Hg | mm | | |
| 02-430-051-020 | 51.0 | 61.0 | 45 | 3.1 | 0.88 | 24 | 220 | 20 | |
| 02-430-063-020 | 63.0 | 76.0 | 45 | 3.1 | 1.27 | 24 | 270 | 20 | |
| 02-430-076-020 | 76.0 | 90.0 | 45 | 3.1 | 1.62 | 24 | 350 | 20 | |
| 02-430-102-020 | 102.0 | 118.6 | 45 | 3.1 | 2.43 | 24 | 450 | 20 | |



OPTIMA® SR Clear/Orange Suction Hose

Heavy duty suction and discharge hose for use in the rental/construction, pumping and general water transfer.

REINFORCEMENT: High tensile textile cord with orange anti-shock rigid PVC helix.
INNER TUBE: Clear smooth PVC - abrasive resistant.
COVER: Clear corrugated PVC - abrasive resistant.
SAFETY FACTOR: 3:1
BRANDING: N/A
TEMPERATURE: -25°C to +65°C

ADVANTAGES:

- Suitable for pressure and suction applications
- Smooth bore
- Lightweight and flexible
- Raised helix provides easy drag
- Clear sidewall permits visual check of material flow

| Part Number | ID | Nom. OD | Working Pressure @ 20°C | | Weight | Vacuum Rating @ 20°C | Bend Radius | Lengths | |
|----------------|-----|---------|-------------------------|-----|--------|----------------------|-------------|---------|--|
| | mm | mm | psi | bar | kg/m | in/Hg | mm | metres | |
| 02-865-051-030 | 51 | 66.0 | 100 | 6.9 | 1.03 | 29 | 102 | 30.5 | |
| 02-865-076-030 | 76 | 94.0 | 100 | 6.9 | 1.68 | 28 | 152 | 30.5 | |
| 02-865-102-030 | 102 | 121.4 | 80 | 5.5 | 2.59 | 28 | 178 | 30.5 | |
| 02-865-127-030 | 127 | 153.4 | 70 | 4.8 | 4.45 | 28 | 229 | 30.5 | |
| 02-865-152-030 | 152 | 182.1 | 70 | 4.8 | 5.77 | 28 | 254 | 30.5 | |



OPTIMA® PVC Nitrile Blue Hose

The specially blended formulation provides excellent flexibility even at low temperatures making it ideally suited for liquid waste transfer and septic cleaning applications.

REINFORCEMENT: Blue rigid PVC helix.
INNER TUBE: Blue smooth PVC/NBR - abrasive resistant.
COVER: Blue smooth PVC/NBR - abrasive resistant.
SAFETY FACTOR: 3:1
BRANDING: N/A
TEMPERATURE: -20°C to +60°C

ADVANTAGES:

- Excellent flexibility even in colder environments
- Resistant to hydrocarbon based materials - diesel fuels, oil, grease and lubricants
- UV stabilised
- Nitrile blend ensures greater and broader chemical resistance

| Part Number | ID | Nom. OD | Working Pressure @ 20°C | | Weight | Vacuum Rating @ 20°C | Bend Radius | Lengths | |
|----------------|-----|---------|-------------------------|-----|--------|----------------------|-------------|---------|--|
| | mm | mm | psi | bar | kg/m | in/Hg | mm | metres | |
| 02-400-025-020 | 25 | 31.5 | 87 | 6.0 | 0.39 | 29 | 76 | 20 | |
| 02-400-032-020 | 32 | 39.1 | 80 | 5.5 | 0.51 | 29 | 102 | 20 | |
| 02-400-038-020 | 38 | 46.2 | 72 | 5.0 | 0.65 | 29 | 152 | 20 | |
| 02-400-051-020 | 51 | 60.7 | 72 | 5.0 | 1.10 | 29 | 203 | 20 | |
| 02-400-063-020 | 63 | 74.4 | 72 | 5.0 | 1.50 | 29 | 254 | 20 | |
| 02-400-076-020 | 76 | 87.1 | 60 | 4.1 | 1.80 | 29 | 305 | 20 | |
| 02-400-102-020 | 102 | 115.1 | 56 | 3.9 | 3.01 | 29 | 380 | 20 | |



EXITFLEX® PH623 Corrugated Bulk Material Handling Hose

Designed for the transfer of dry abrasive materials such as dry powder and grain, it is ideally suited for sand recovery.

REINFORCEMENT: High tensile textile cord with embedded steel helix wire.
INNER TUBE: Black smooth conductive NR - abrasion resistant.
COVER: Black corrugated wrapped conductive NR/SBR - abrasion and ozone resistant.

SAFETY FACTOR: 3:1
BRANDING: EXITFLEX® >>> PH623 >>> BULK
MATERIAL HANDLING >>> 5 BAR [75 PSI] - DN152 - 6".
TEMPERATURE: -20°C to +80°C

| Part Number | ID | Nom. OD | Working Pressure @ 20°C | | Weight | Vacuum Rating @ 20°C | Bend Radius | Lengths | |
|----------------|-----|---------|-------------------------|-----|--------|----------------------|-------------|---------|--|
| | mm | mm | psi | bar | kg/m | in/Hg | mm | metres | |
| 10-870-102-020 | 102 | 116.0 | 75 | 5.0 | 3.20 | 27 | 290 | 20 | |
| 10-870-127-020 | 127 | 143.0 | 75 | 5.0 | 4.80 | 24 | 480 | 20 | |
| 10-870-152-020 | 152 | 168.0 | 75 | 5.0 | 5.90 | 24 | 580 | 20 | |
| 10-870-203-020 | 203 | 221.0 | 75 | 5.0 | 9.10 | 21 | 780 | 10 | |



OPTIMA® SCR PVC Nitrile Blue Black Hose

The specially blended formulation provides excellent flexibility even at low temperatures making it ideally suited for liquid waste transfer and septic cleaning applications, the exposed helix allows the hose to slide easily over rough surfaces.

REINFORCEMENT: Blue rigid PVC helix.
INNER TUBE: Black smooth PVC/NBR - abrasive resistant.
COVER: Black corrugated PVC/NBR - abrasive resistant.
SAFETY FACTOR: 3:1
BRANDING: N/A
TEMPERATURE: -40°C TO +60°C

ADVANTAGES:

- Heavy duty.
- Resistant to hydrocarbon based materials - diesel fuels, oil, grease and lubricants.
- Excellent flexibility even in colder environments.
- Nitrile blend ensures greater and broader chemical resistance.

* Sizes available to order on request

| Part Number | ID | Nom. OD | Working Pressure @ 20°C | | Weight | Vacuum Rating @ 20°C | Bend Radius | Lengths | |
|----------------|-----|---------|-------------------------|-----|--------|----------------------|-------------|---------|--|
| | mm | mm | psi | bar | kg/m | in/Hg | mm | metres | |
| 02-401-032-020 | 32* | 41.0 | 50 | 3.4 | 0.57 | 29 | 88 | 20 | |
| 02-401-038-020 | 38 | 48.0 | 50 | 3.4 | 0.65 | 29 | 102 | 20 | |
| 02-401-051-020 | 51 | 62.0 | 50 | 3.4 | 1.10 | 29 | 152 | 20 | |
| 02-401-063-020 | 63 | 76.0 | 50 | 3.4 | 1.51 | 29 | 165 | 20 | |
| 02-401-076-020 | 76 | 91.0 | 45 | 3.1 | 1.80 | 29 | 203 | 20 | |
| 02-401-102-020 | 102 | 115.0 | 38 | 2.6 | 2.90 | 29 | 305 | 20 | |



ExitFlex Sewer Jetting Hose

Exitflex sewer cleaning hoses for standard sewer cleaning vehicles and cleaning equipment are a must when the application calls for extreme durability while maintaining flexibility.

For the applications that call for a higher working pressure the ExitFlex sewer hose has been engineered and manufactured with a thermoplastic elastomer tube, 1 or 2 braids of high tensile synthetic fibre reinforcement and a polyurethane cover that extends the life of the hose by greatly improving cut and abrasion resistance.

Each hose is designed with a unique cover colour in compliance with industry standards allowing the operator to quickly identify the working pressures of each hose type making Exitflex hoses the optimal choice for the sewer cleaning and sewer jetting industry.



ExitFlex EF303 Water Jetting / Lateral Sewer Cleaning Hose - Green

REINFORCEMENT: High tensile textile cord.
INNER TUBE: White smooth thermoplastic elastomer.
COVER: Green smooth polyurethane.
SAFETY FACTOR: 3 : 1
BRANDING: Example: Exitflex Swiss Technology
EF303-8 Sewer Jetting Hose ID 1/2" W.P 4000 PSI
(280 BAR).
TEMPERATURE: -40°C TO +60°C

ADVANTAGES:

- Abrasive and cut resistant cover designed for long life.
- Bonded construction to resist kinking.
- Cover material specially compounded to resist microbiological degradation.
- Light weight.

| Part Number | ID | Nom. OD | Working Pressure @ 20°C | | Fitting End # 1 | | | Fitting End # 2 | | | Weight | Bend Radius | Lengths |
|----------------|------|---------|-------------------------|-----|-----------------|-------------|------|-----------------|------|-------------|--------|-------------|---------|
| | mm | mm | psi | bar | Size | Type | Size | Type | Size | Type | kg/m | mm | metres |
| 80-303-08-120F | 12.7 | 23.4 | 4000 | 280 | 1/2" | M NPT Fixed | 1/2" | M NPT Fixed | 1/2" | M NPT Fixed | 0.2900 | 75 | 120 |



ExitFlex EF303Y Water Jetting / Lateral Sewer Cleaning Hose - Yellow

REINFORCEMENT: High tensile textile cord.
INNER TUBE: White smooth thermoplastic elastomer.
COVER: Yellow smooth polyurethane.
SAFETY FACTOR: 3 : 1
BRANDING: Example: Exitflex Swiss Technology
EF303-6 Sewer Jetting Hose ID 3/8" W.P 5000 PSI
(345 BAR).
TEMPERATURE: -40°C TO +60°C

ADVANTAGES:

- Abrasive and cut resistant cover designed for long life.
- Bonded construction to resist kinking.
- Cover material specially compounded to resist microbiological degradation.
- Light weight.

| Part Number | ID | Nom. OD | Working Pressure @ 20°C | | Fitting End # 1 | | | Fitting End # 2 | | | Weight | Bend Radius | Lengths |
|----------------|-----|---------|-------------------------|-----|-----------------|-------------|------|-----------------|------|-------------|--------|-------------|---------|
| | mm | mm | psi | bar | Size | Type | Size | Type | Size | Type | kg/m | mm | metres |
| 80-302-03-060F | 4.8 | 10.3 | 5000 | 345 | 1/4" | M BSP Fixed | 1/4" | M BSP Fixed | 1/4" | M BSP Fixed | 0.0800 | 40 | 60 |
| 80-302-04-060F | 6.4 | 12.7 | 5000 | 345 | 1/4" | M BSP Fixed | 1/4" | M BSP Fixed | 1/4" | M BSP Fixed | 0.1500 | 40 | 60 |
| 80-302-06-060F | 9.6 | 17.0 | 5000 | 345 | 3/8" | M BSP Fixed | 3/8" | M BSP Fixed | 3/8" | M BSP Fixed | 0.1600 | 75 | 60 |



ExitFlex EF308 Sewer Jetting Hose - Red Ultra-Flexible

REINFORCEMENT: High tensile textile cord.
INNER TUBE: White smooth thermoplastic elastomer.
COVER: Red smooth polyurethane.
SAFETY FACTOR: 2.5 : 1
BRANDING: Example: Exitflex Swiss Technology
EF308-16 Sewer Jetting Hose ID 1" W.P 3600 PSI
(250 BAR).
TEMPERATURE: -40°C TO +60°C

ADVANTAGES:

- Abrasive and cut resistant cover designed for long life.
- Bonded construction to resist kinking.
- Cover material specially compounded to resist microbiological degradation.
- Light weight.

Note: * Available for order on request.

| Part Number | ID | Nom. OD | Working Pressure @ 20°C | | Fitting End # 1 | | | Fitting End # 2 | | | Weight | Bend Radius | Lengths |
|-----------------|------|---------|-------------------------|-----|-----------------|-------------|--------|-----------------|--------|--------------|--------|-------------|---------|
| | mm | mm | psi | bar | Size | Type | Size | Type | Size | Type | kg/m | mm | metres |
| 80-308-12-183F* | 19.1 | 29.2 | 3600 | 250 | 3/4" | M BSP Fixed | 3/4" | F BSP Swivel | 3/4" | F BSP Swivel | 0.4300 | 115 | 183 |
| 80-308-16-183F | 25.4 | 36.6 | 3600 | 250 | 1" | M BSP Fixed | 1" | F BSP Swivel | 1" | F BSP Swivel | 0.6500 | 135 | 183 |
| 80-308-20-183F* | 31.5 | 45.7 | 3600 | 250 | 1-1/4" | M BSP Fixed | 1-1/4" | F BSP Swivel | 1-1/4" | F BSP Swivel | 0.9100 | 210 | 183 |



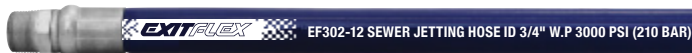
ExitFlex EF301 Sewer Jetting Hose - Orange

REINFORCEMENT: High tensile textile cord.
INNER TUBE: White smooth thermoplastic elastomer.
COVER: Orange smooth polyurethane.
SAFETY FACTOR: 2.5 : 1
BRANDING: Example: Exitflex Swiss Technology
EF301-12 Sewer Jetting Hose ID 3/4" W.P 2500 PSI
(175 BAR).
TEMPERATURE: -40°C TO +60°C

ADVANTAGES:

- Abrasive and cut resistant cover designed for long life.
- Bonded construction to resist kinking.
- Cover material specially compounded to resist microbiological degradation.
- Light weight.

| Part Number | ID | Nom. OD | Working Pressure @ 20°C | | Fitting End # 1 | | | Fitting End # 2 | | | Weight | Bend Radius | Lengths |
|----------------|------|---------|-------------------------|-----|-----------------|-------|-------|-----------------|-------|-------|--------|-------------|---------|
| | mm | mm | psi | bar | Size | Type | | Size | Type | | kg/m | mm | metres |
| 80-301-12-122F | 19.0 | 29.2 | 2500 | 175 | 3/4" | M NPT | Fixed | 3/4" | M NPT | Fixed | 0.4500 | 125 | 122 |
| 80-301-12-183F | 19.0 | 29.2 | 2500 | 175 | 3/4" | M NPT | Fixed | 3/4" | M NPT | Fixed | 0.4500 | 125 | 183 |
| 80-301-16-183F | 25.0 | 36.8 | 2500 | 175 | 1" | M NPT | Fixed | 1" | M NPT | Fixed | 0.6400 | 160 | 183 |
| 80-301-20-183F | 32.0 | 45.7 | 2500 | 175 | 1-1/4" | M NPT | Fixed | 1-1/4" | M NPT | Fixed | 1.0100 | 250 | 183 |



ExitFlex EF302 Sewer Jetting Hose - Blue

REINFORCEMENT: High tensile textile cord.
INNER TUBE: White smooth thermoplastic elastomer.
COVER: Blue smooth polyurethane.
SAFETY FACTOR: 2.5 : 1
BRANDING: Example: Exitflex Swiss Technology
EF302-12 Sewer Jetting Hose ID 3/4" W.P 3000 PSI
(210 BAR).
TEMPERATURE: -40°C TO +60°C

ADVANTAGES:

- Abrasive and cut resistant cover designed for long life.
- Bonded construction to resist kinking.
- Cover material specially compounded to resist microbiological degradation.
- Light weight.

| Part Number | ID | Nom. OD | Working Pressure @ 20°C | | Fitting End # 1 | | | Fitting End # 2 | | | Weight | Bend Radius | Lengths |
|----------------|------|---------|-------------------------|-----|-----------------|-------|-------|-----------------|-------|-------|--------|-------------|---------|
| | mm | mm | psi | bar | Size | Type | | Size | Type | | kg/m | mm | metres |
| 80-302-12-122F | 19.0 | 31.8 | 3000 | 210 | 3/4" | M NPT | Fixed | 3/4" | M NPT | Fixed | 0.5000 | 125 | 122 |
| 80-302-12-183F | 19.0 | 31.8 | 3000 | 210 | 3/4" | M NPT | Fixed | 3/4" | M NPT | Fixed | 0.5000 | 125 | 183 |
| 80-302-16-183F | 25.0 | 38.7 | 3000 | 210 | 1" | M NPT | Fixed | 1" | M NPT | Fixed | 0.6900 | 160 | 183 |



EXITFLEX® PW3K



EXITFLEX® PW6K

ExitFlex Pressure Washer Hose

For heavy duty use with hot water and cold water and detergent fluids, and high pressure cleaning equipment.

REINFORCEMENT: 1 High tensile steel wire (PW3K),
2 High tensile steel wire (PW6K)
INNER TUBE: Synthetic rubber black hot water resistant.
COVER: Synthetic rubber, blue non marking, weather, oil, ozone, and abrasion resistant.
SAFETY FACTOR: 3:1
BRANDING: PW3K: EXITFLEX® >>> EF513 - PW 3K-210 - 3/8" >>> DN10 (MAX TEMP 155°C / 310°F) >>> MAX WP 210 BAR (3000 PSI)

PW6K: EXITFLEX® >>> EF513 - PW 6K-420 - 3/8" >>> DN10 (MAX TEMP 155°C / 310°F) >>> MAX WP 420 BAR (6000 PSI)
TEMPERATURE: -40°C TO +155°C

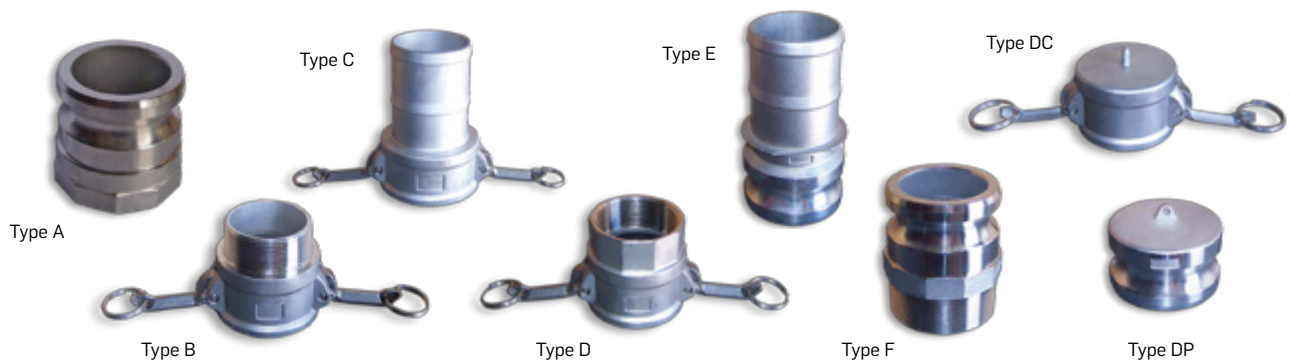
ADVANTAGES:

- Ultra Flexible Hose, Non marking blue cover.
- Extended service life, lightweight.
- Special identification with White Mylar branding.

| EXITFLEX® 3K Part Number | ID | Nom. OD | Working Pressure | | Weight | Burst Pressure | | Bend Radius |
|-----------------------------|-----|---------|------------------|-----|--------|----------------|------|-------------|
| | mm | mm | psi | bar | kg/m | psi | bar | mm |
| 80-100-PW3K-004 | 6.4 | 12.2 | 3000 | 210 | 0.17 | 9000 | 630 | 75 |
| 80-100-PW3K-006 | 9.5 | 15.5 | 3000 | 210 | 0.27 | 9000 | 630 | 90 |
| EXITFLEX® 6K Part Number | ID | Nom. OD | Working Pressure | | Weight | Burst Pressure | | Bend Radius |
| | mm | mm | psi | bar | kg/m | psi | bar | mm |
| 80-100-PW6K-006 | 9.5 | 17.4 | 6000 | 420 | 0.40 | 18000 | 1260 | 90 |

FITTING & HARDWARE

| Size (mm) | Aluminium Camlock | |
|-----------|-------------------|---|
| | Working Pressure | Descriptions |
| 15 | 150 psi | Gravity-Cast: General use / Agricultural / Industrial Manufactured using the gravity-casting method. This is the most common / economical of the Aluminium range used for general water applications. NB: CAM & GROOVE COUPLINGS MUST NEVER BE USED FOR STEAM OR COMPRESSED AIR APPLICATIONS. |
| 100 | 150 psi | |
| 150 | 75 psi | |
| 200 | 75 psi | |



| Size (Inches) | Type A | Type B | Type C | Type D | Type E | Type F | Type DP | Type DC |
|---------------|------------------------------|------------------------------|---------------------------|--------------------------------|-------------------------|----------------------------|-------------------|--------------------|
| | Male Camlock x Female Thread | Female Camlock x Male Thread | Female Camlock x Hosetail | Female Camlock x Female Thread | Male Camlock x Hosetail | Male Camlock x Male Thread | Male Camlock Plug | Female Camlock Cap |
| 1/2 | 20-000-A050 | 20-000-B050 | 20-000-C050 | 20-000-D050 | 20-000-E050 | 20-000-F050 | 20-000-DP050 | 20-000-DC050 |
| 3/4 | 20-000-A075 | 20-000-B075 | 20-000-C075 | 20-000-D075 | 20-000-E075 | 20-000-F075 | 20-000-DP075 | 20-000-DC075 |
| 3/4 x 1/2 | 20-000-A075050 | 20-000-B075050 | - | 20-000-D075050 | - | 20-000-F075050 | - | - |
| 1 | 20-000-A100 | 20-000-B100 | 20-000-C100 | 20-000-D100 | 20-000-E100 | 20-000-F100 | 20-000-DP100 | 20-000-DC100 |
| 1-1/4 | 20-000-A125 | 20-000-B125 | 20-000-C125 | 20-000-D125 | 20-000-E125 | 20-000-F125 | 20-000-DP125 | 20-000-DC125 |
| 1-1/2 | 20-000-A150 | 20-000-B150 | 20-000-C150 | 20-000-D150 | 20-000-E150 | 20-000-F150 | 20-000-DP150 | 20-000-DC150 |
| 1-1/2 x 2 | 20-000-A150200 | - | - | - | - | 20-000-F150200 | - | - |
| 2 | 20-000-A200 | 20-000-B200 | 20-000-C200 | 20-000-D200 | 20-000-E200 | 20-000-F200 | 20-000-DP200 | 20-000-DC200 |
| 2 x 1-1/2 | 20-000-A200150 | 20-000-B200150 | 20-000-C200150 | 20-000-D200150 | 20-000-E200150 | 20-000-F200150 | - | - |
| 2 x 3 | 20-000-A200300 | - | - | - | - | - | - | - |
| 2-1/2 | 20-000-A250 | 20-000-B250 | 20-000-C250 | 20-000-D250 | 20-000-E250 | 20-000-F250 | 20-000-DP250 | 20-000-DC250 |
| 2-1/2 x 2 | 20-000-A250200 | - | 20-000-C250200 | 20-000-D250200 | - | 20-000-F250200 | - | - |
| 3 | 20-000-A300 | 20-000-B300 | 20-000-C300 | 20-000-D300 | 20-000-E300 | 20-000-F300 | 20-000-DP300 | 20-000-DC300 |
| 3 x 2 | 20-000-A300200 | 20-000-B300200 | 20-000-C300200 | 20-000-D300200 | 20-000-E300200 | 20-000-F300200 | - | - |
| 3 x 2-1/2 | 20-000-A300250 | 20-000-B300250 | 20-000-C300250 | - | 20-000-E300250 | - | - | - |
| 3 x 4 | 20-000-A300400 | 20-000-B300400 | 20-000-C300400 | - | - | 20-000-F300400 | - | - |
| 4 | 20-000-A400 | 20-000-B400 | 20-000-C400 | 20-000-D400 | 20-000-E400 | 20-000-F400 | 20-000-DP400 | 20-000-DC400 |
| 4 x 2-1/2 | 20-000-A400250 | - | - | - | - | - | - | - |
| 4 x 3 | 20-000-A400300 | 20-000-B400300 | 20-000-C400300 | 20-000-D400300 | 20-000-E400300 | 20-000-F400300 | - | - |
| 5 | 20-000-A500 | 20-000-B500 | 20-000-C500 | 20-000-D500 | 20-000-E500 | 20-000-F500 | 20-000-DP500 | 20-000-DC500 |
| 6 | 20-000-A600 | 20-000-B600 | 20-000-C600 | 20-000-D600 | 20-000-E600 | 20-000-F600 | 20-000-DP600 | 20-000-DC600 |
| 6 x 4 | 20-000-A600400 | - | - | - | - | - | - | - |
| 8 | 20-000-A800 | 20-000-B800 | 20-000-C800 | 20-000-D800 | 20-000-E800 | 20-000-F800 | 20-000-DP800 | 20-000-DC800 |

Powell Industrial's standard aluminium cam & groove couplings, reducers & adaptors available in sizes from 1/2" thru to 8" are produced to military standards making them interchangeable with other brands designed and manufactured to the same specification with the exception of 1/2" (12.7mm), 5" (127mm) and 8" (203mm), the A-A-59326A Mil specification does not apply to these sizes due to the presence of two different versions in today's market.



| Size (Inches) | Type BC | | Type CA | Type AA |
|------------------|----------------------------------|----------------------------------|----------------------------------|--------------------------------|
| | Female Camlock x 68° Hosetail | Female Camlock x 90° Hosetail | Female Camlock x Male Camlock | Male Camlock x Male Camlock |
| 1 | - | - | - | 20-000-AA100 |
| 1-1/4 | - | - | - | 20-000-AA125 |
| 1-1/2 | - | - | - | 20-000-AA150 |
| 2 | 20-100-BC68200 | 20-100-BC90200 | - | 20-000-AA200 |
| 2 x 1-1/2 | - | - | 20-000-CA200150 | 20-000-AA200150 |
| 2 x 3 | - | - | 20-000-CA200300 | - |
| 2 X 4 | - | - | 20-000-CA200400 | - |
| 2-1/2 | 20-100-BC68250 | 20-100-BC90250 | - | 20-000-AA250 |
| 2-1/2 x 2 | - | - | 20-000-CA250200 | 20-000-AA250200 |
| 3 | 20-100-BC68300 | 20-100-BC90300 | - | 20-000-AA300 |
| 3 x 2 | - | - | 20-000-CA300200 | 20-000-AA300200 |
| 3 x 2-1/2 | - | - | 20-000-CA300250 | 20-000-AA300250 |
| 3 x 4 | - | - | 20-000-CA300400 | - |
| 4 | 20-100-BC68400 | 20-100-BC90400 | - | 20-000-AA400 |
| 4 x 2 | - | - | 20-000-CA400200 | - |
| 4 x 2-1/2 | - | - | 20-000-CA400250 | 20-000-AA400200 |
| 4 x 3 | - | - | 20-000-CA400300 | 20-000-AA400300 |
| 4 x 6 | - | - | 20-000-CA400600 | - |
| 6 | 20-100-BC68600 | - | - | 20-000-AA600 |
| 6 x 4 | - | - | 20-000-CA600400 | 20-000-AA600400 |



Type BC - 68° hosetail



Type BC - 90° hosetail



Type CA



Type AA



Type DCL



Type LA



Type LC

| Size (Inches) | Type DD | Type DCL | Type LA | | Type LC |
|------------------|------------------------------------|--------------------------------|------------------------------------|------------------------------------|--------------------------------------|
| | Female Camlock x Female Camlock | Female Camlock Lockable Cap | Male Camlock x Undrilled Flange | Male Camlock x Table D/E Flange | Female Camlock x Undrilled Flange |
| 1 | - | - | - | - | - |
| 1-1/4 | - | - | - | - | - |
| 1-1/2 | 20-000-DD150 | 20-000-DCL150 | - | - | - |
| 2 | 20-000-DD200 | 20-000-DCL200 | 20-100-LAU200 | 20-100-LAD200 | 20-100-LCU200 |
| 2 x 1-1/2 | - | - | - | - | - |
| 2 x 3 | - | - | - | - | - |
| 2 X 4 | - | - | - | - | - |
| 2-1/2 | - | 20-000-DCL250 | 20-100-LAU250 | 20-100-LAD250 | - |
| 2-1/2 x 2 | - | - | - | - | - |
| 3 | 20-000-DD300 | 20-000-DCL300 | 20-100-LAU300 | 20-100-LAD300 | 20-100-LCU300 |
| 3 x 2 | 20-000-DD300200 | - | - | - | - |
| 3 x 2-1/2 | - | - | - | - | - |
| 3 x 4 | - | - | - | - | - |
| 4 | 20-000-DD400 | 20-000-DCL400 | 20-100-LAU400 | 20-100-LAD400 | 20-100-LCU400 |
| 4 x 2 | - | - | - | - | - |
| 4 x 2-1/2 | - | - | - | - | - |
| 4 x 3 | 20-000-DD400300 | - | - | - | - |
| 4 x 6 | - | - | - | - | - |
| 6 | - | 20-000-DCL600 | 20-100-LAU600 | 20-100-LAD600 | - |
| 6 x 4 | - | - | - | - | - |



Bauer Type B Couplings

Bauer Type Couplings are quick action fittings with four parts:- Male Ball, Closure Ring Female Socket and Sealing Ring.

Note: Other sizes up to 12" also available on request.
Stainless Steel made to order.

Bauer type couplings can be quickly and easily assembled with three manual movements providing a leak proof connection in both suction and pressure applications of up to 20bar, the spherical construction of the ball and socket joint ensures the seal is equally efficient even with an angular deviation of up to 30 degrees.

| Size (Inches) | Zinc Plated Coupling Set | Zinc Plated Coupling Parts | | | |
|---------------|--------------------------|----------------------------|--------------------------------|---------------|-------------------|
| | Complete Set | Male Ball x Hose Tail | Female x Hose Tails (inc Seal) | Closure Rings | Replacement Seals |
| 2 | 21-500-032 | 21-510-032 | 21-520-032 | 21-530-032 | 21-540-032 |
| 3 | 21-500-048 | 21-510-048 | 21-520-048 | 21-530-048 | 21-540-048 |
| 4 | 21-500-064 | 21-510-064 | 21-520-064 | 21-530-064 | 21-540-064 |
| 5 | - | 21-510-080 | 21-520-080 | 21-530-080 | 21-540-080 |
| 6 | 21-500-096 | 21-510-096 | 21-520-096 | 21-530-096 | 21-540-096 |
| 8 | 21-500-128 | 21-510-128 | 21-520-128 | 21-530-128 | 21-540-128 |



Bauer Type B Couplings – Flanged Table D

| Size (Inches) | Zinc Plated Coupling Parts | |
|---------------|----------------------------------|----------------------------|
| | Male x Flange (inc Closure Ring) | Female x Flange (inc Seal) |
| 2 | 21-550-032 | - |
| 3 | 21-550-048 | 21-560-048 |
| 4 | 21-550-064 | 21-560-064 |
| 6 | 21-550-096 | 21-560-096 |
| 8 | 21-550-128 | 21-560-128 |



Bauer Type B Couplings – Male BSP

| Size (Inches) | Zinc Plated Coupling Parts | | | |
|---------------|----------------------------|-------------|-----------------------|------------|
| | Female x BSPT (inc seal) | Male x BSPT | Female cap (inc seal) | Male Plug |
| 2 | 21-570-032 | 21-580-032 | - | - |
| 3 | 21-570-048 | 21-580-048 | 21-590-048 | 21-591-048 |
| 4 | 21-570-064 | 21-580-064 | 21-590-064 | 21-591-064 |
| 6 | 21-570-096 | 21-580-096 | 21-590-096 | 21-591-096 |
| 8 | - | - | 21-590-128 | 21-591-128 |



Bauer Type B Couplings – Weld Ons

| Size (Inches) | Zinc Plated Coupling Parts | |
|---------------|----------------------------|--------------|
| | Female Weld-on (inc seal) | Male Weld-on |
| 2 | - | - |
| 3 | 21-681-048 | 21-690-048 |
| 4 | 21-681-064 | 21-690-064 |
| 6 | 21-681-096 | 21-690-096 |
| 8 | 21-681-128 | 21-690-128 |



Bauer Type B Couplings – Reducers

| Female x Male Size (Inches) | Zinc Plated Coupling Parts | |
|-----------------------------|----------------------------|-----------------------|
| | Female x Male Enlarger | Female x Male Reducer |
| 4 x 6 | 21-620-064-096 | - |
| 6 x 4 | - | 21-621-096-064 |
| 6 x 8 | 21-620-069-128 | - |
| 8 x 6 | - | 21-621-128-096 |



Travis Type Couplings

These couplings are ideally suited for use in the waste transfer and aquaculture industries.

Note: The entire Travis Type Couplings range and Adaptors are also available.

When it comes to making a safe and secure connection for the movement of valuable and hazardous materials these fittings are exceptional.

Made from only the best raw materials and to the highest quality manufacturing standards, Travis Type Couplings can be relied upon to get the task done minimising failures and maximising efficiencies.

For vacuum use and working pressures up to 100 psi.

| Size (Inches) | Zinc Plated Coupling Set | Zinc Plated Coupling Parts | | | | |
|---------------|----------------------------------|----------------------------|-------------------|----------------------|-------------------|-----------------|
| | Complete Set | Male (inc Seal) | Female (inc Seal) | Closure Ring | Male Seal (Round) | Female Seal (U) |
| 3 | 21-800-048 | - | - | - | - | - |
| 4 | 21-800-064 | 21-810-064 | 21-820-064 | 21-830-064 | 21-840-064 | 21-841-064 |
| 5 | 21-800-080 | 21-810-080 | 21-820-080 | 21-830-080 | 21-840-080 | - |
| 6 | 21-800-096 | 21-810-096 | 21-820-096 | 21-830-096 | 21-840-096 | 21-841-096 |
| 8 | 21-800-128 | - | - | - | - | - |
| Size (Inches) | Zinc Plated Coupling Parts | | | | | |
| | Male x Female Reducer (inc seal) | | | Male Plug (inc seal) | | |
| 3 | - | | | 21-860-048 | | |
| 4 | - | | | 21-860-064 | | |
| 6 | - | | | 21-860-048 | | |
| 6 x 4 | 21-870-096-064 | | | - | | |



Pump Pro Site Glass Replacement

Replacement Sight Glasses for use on vacuum tanks, purchased as a sight glass with O Ring or as a complete unit including weld ring.



| Code | Description |
|------------|---|
| 62-100-002 | Pump Pro Site Glass with O Ring - 2in |
| 62-100-012 | Pump Pro Site Glass Complete Set Steel - 2in |
| 62-100-022 | Pump Pro Site Glass Complete Set Alum - 2in |
| 62-100-032 | Pump Pro Site Glass O Ring only - 2in |
| 62-100-035 | Pump Pro Site Glass O Ring only - 3in (suit 5in site glass) |
| 62-100-045 | Pump Pro Site Glass Handle Wheel only - 5in |



Valves - Pump Pro RIV brass quick open lever gate valve

| Size (Inches) | Product number | |
|---------------|----------------|-------------|
| | BSP | NPT |
| 4 | 25-205-064 | 25-205-064N |
| 6 | 25-205-096 | 25-205-096N |



Brass Ball Valves

Female x Female BSP Nickel Plated Brass Lever Handle Valve: Ideal for hot/cold water (non-potable), various oils, chemicals and compressed air.

| Size (Inches) | Female x Female BSP | Size (Inches) | Female x Female BSP |
|---------------|---------------------|---------------|---------------------|
| 1/4 | 25-000-004 | 1½ | 25-000-024 |
| 3/8 | 25-000-006 | 2 | 25-000-032 |
| 1/2 | 25-000-008 | 2½ | 25-000-040 |
| 3/4 | 25-000-012 | 3 | 25-000-048 |
| 1 | 25-000-016 | 4 | 25-000-064 |
| 1¼ | 25-000-020 | - | - |



High pressure spray guns - Mecline

| Code | Inlet | | Outlet | | Working Pressure | | Flow Rate | Temp Rating | |
|--------------|-------|--------|--------|-------|------------------|-----|-----------|-------------|-----|
| | Size | Type | Size | Type | psi | bar | l/min | °C | °F |
| 28-208-310SW | 3/8" | Swivel | 1/4" | Fixed | 4500 | 310 | 40 | 150 | 300 |
| 28-208-311 | 3/8" | Fixed | 1/4" | Fixed | 4500 | 310 | 40 | 150 | 300 |
| 28-208-955 | 3/8" | Fixed | 1/4" | Fixed | 5220 | 360 | 40 | 160 | 320 |



High pressure ceramic rotating nozzles - TPR25

Made in Italy.

| Code | Inlet | | Outlet | | Working Pressure | | Temp Rating | |
|------------|---------------------------------------|------------|------------|-------------|------------------|-----|-------------|-----|
| | Size | Type | Size | Colour | psi | bar | °C | °F |
| 28-250-035 | 1/4" | BSPF | 0.35" | Orange | 3625 | 250 | 90 | 190 |
| 28-250-040 | 1/4" | BSPF | 0.40" | Dark Green | 3625 | 250 | 90 | 190 |
| 28-250-045 | 1/4" | BSPF | 0.45" | Dark Yellow | 3625 | 250 | 90 | 190 |
| 28-250-050 | 1/4" | BSPF | 0.50" | Light Blue | 3625 | 250 | 90 | 190 |
| 28-250-055 | 1/4" | BSPF | 0.55" | White | 3625 | 250 | 90 | 190 |
| 28-250-060 | 1/4" | BSPF | 0.60" | Violet | 3625 | 250 | 90 | 190 |
| 28-250-065 | 1/4" | BSPF | 0.65" | Dark Brown | 3625 | 250 | 90 | 190 |
| Code | Flow Rate Chart in Ltrs Per Min (LPM) | | | | | | | |
| | @ 1500 psi | @ 2000 psi | @ 2500 psi | @ 3000 psi | @ 3200 psi | | | |
| 28-250-035 | 8 | 9.4 | 10.1 | 11.3 | 11.8 | | | |
| 28-250-040 | 9.1 | 10.8 | 11.5 | 12.9 | 13.5 | | | |
| 28-250-045 | 10.3 | 12.1 | 13.0 | 14.5 | 15.2 | | | |
| 28-250-050 | 11.4 | 13.5 | 14.4 | 16.1 | 16.9 | | | |
| 28-250-055 | 12.5 | 14.8 | 15.9 | 17.7 | 18.6 | | | |
| 28-250-060 | 13.7 | 16.2 | 17.3 | 19.3 | 20.3 | | | |
| 28-250-065 | 14.8 | 17.5 | 18.7 | 21.0 | 22.0 | | | |



High pressure ceramic rotating nozzles - Rotojet 400

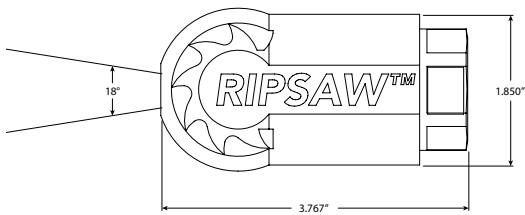
Made in Germany.

| Code | Inlet | | Outlet | | Working Pressure | | Temp Rating | |
|------------|---------------------------------------|------------|------------|------------|------------------|-----|-------------|-----|
| | Size | Type | Size | Colour | psi | bar | °C | °F |
| 28-250-250 | 1/4" | BSPF | 0.5" | - | 5800 | 400 | 90 | 190 |
| 28-250-260 | 1/4" | BSPF | 0.6" | - | 5800 | 400 | 90 | 190 |
| 28-250-290 | 1/4" | BSPF | 0.9" | - | 5800 | 400 | 90 | 190 |
| Code | Flow Rate Chart in Ltrs Per Min (LPM) | | | | | | | |
| | @ 3600 psi | @ 4000 psi | @ 4500 psi | @ 5000 psi | @ 5800 psi | | | |
| 28-250-250 | 17.7 | 18.9 | 20.1 | 21.0 | 22.8 | | | |
| 28-250-260 | 21.2 | 22.7 | 24.1 | 25.2 | 27.4 | | | |
| 28-250-290 | 31.8 | 34.1 | 36.1 | 37.8 | 41.0 | | | |



High Pressure Lance Extensions & Hand Grip

| Code | Length | Inlet | | Outlet | | Working Pressure | | Flow Rate | Temp Rating | |
|-----------------|--------|-------|------|--------|------|------------------|-----|-----------|-------------|-----|
| | mm | Size | Type | Size | Type | psi | bar | l/min | °C | °F |
| 28-270-150 | 1500 | 1/4" | BSPT | 1/4" | BSPT | 4500 | 310 | 45 | 160 | 320 |
| 28-270-200 | 2000 | 1/4" | BSPT | 1/4" | BSPT | 4500 | 310 | 45 | 160 | 320 |
| 28-205-004-0350 | 350 | - | - | - | - | - | - | - | 90 | 190 |



High Pressure Tungsten Rotating Nozzles - Ripsaw

PERFORMANCE: Complete jobs faster with more runtime and less downtime, the RIPSAW™ blast a 0° straight water stream at up to 3200psi while rotating at high speed to provide an 18° cone of coverage. The cone shaped flow pattern is ideally suited for potholing applications.

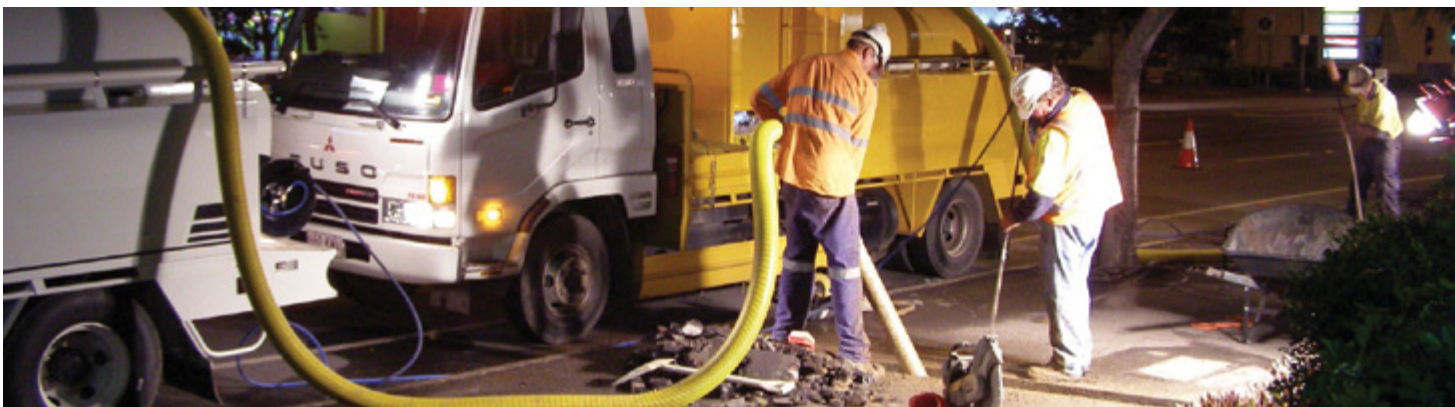
DURABILITY: These heavy duty high impact nozzles are constructed with a stainless steel housing and tungsten carbide wear surfaces to withstand harsh environments and provide longer life than ceramic nozzles. Repair kits are also available for extended life and lower operating costs.

SAFETY: Non-conductive urethane coating on the nozzle body protects users from electrocution.

EFFICIENCY: Greater impingement allows you to use a smaller nozzle size while getting the same impact as nozzles with higher LPM flow rates.

| Code | Inlet | | Outlet | | Nozzle Housing | Nozzle Coating | Minimum Working Pressure | | Maximum Working Pressure | | Maximum Temp Rating | |
|------------|-------------|------|-------------|--------------|----------------|----------------|--------------------------|-----|--------------------------|-----|---------------------|-----|
| | Size (inch) | Type | Nozzle Size | Tip Material | Material | Material | psi | bar | psi | bar | °C | °F |
| 28-260-003 | 1/2 | FNPT | 3.0 | Tungsten | Stainless | Urethane | 1000 | 69 | 3200 | 220 | 82 | 180 |
| 28-260-004 | 1/2 | FNPT | 4.0 | Tungsten | Stainless | Urethane | 1000 | 69 | 3200 | 220 | 82 | 180 |
| 28-260-005 | 1/2 | FNPT | 5.0 | Tungsten | Stainless | Urethane | 1000 | 69 | 3200 | 220 | 82 | 180 |
| 28-260-006 | 1/2 | FNPT | 6.0 | Tungsten | Stainless | Urethane | 1000 | 69 | 3200 | 220 | 82 | 180 |
| 28-260-008 | 1/2 | FNPT | 8.0 | Tungsten | Stainless | Urethane | 1000 | 69 | 3200 | 220 | 82 | 180 |
| 28-260-010 | 1/2 | FNPT | 10.0 | Tungsten | Stainless | Urethane | 1000 | 69 | 3200 | 220 | 82 | 180 |
| 28-260-012 | 1/2 | FNPT | 12.0 | Tungsten | Stainless | Urethane | 1000 | 69 | 3200 | 220 | 82 | 180 |

| Code | | Outlet | Flow Rate Chart in Ltrs Per Min (LPM) | | | | | |
|------------|------------|-------------|---------------------------------------|-----------|-----------|-----------|-----------|-----------------|
| Nozzle | Repair Kit | Nozzle Size | @ 1000psi | @ 1500psi | @ 2000psi | @ 2500psi | @ 3000psi | @ 3200psi (max) |
| 28-260-003 | 28-260-103 | 3.0 | 5.67 | 6.81 | 7.95 | 9.09 | 9.84 | 10.22 |
| 28-260-004 | 28-260-104 | 4.0 | 7.57 | 9.09 | 10.60 | 12.11 | 13.25 | 13.63 |
| 28-260-005 | 28-260-105 | 5.0 | 9.46 | 11.73 | 13.25 | 15.14 | 16.28 | 17.03 |
| 28-260-006 | 28-260-106 | 6.0 | 11.36 | 14.01 | 15.90 | 17.79 | 19.68 | 20.44 |
| 28-260-008 | 28-260-108 | 8.0 | 15.14 | 18.55 | 21.58 | 23.85 | 26.12 | 27.25 |
| 28-260-010 | 28-260-110 | 10.0 | 18.93 | 23.09 | 26.88 | 29.99 | 32.93 | 33.69 |
| 28-260-012 | 28-260-112 | 12.0 | 22.71 | 26.73 | 32.18 | 35.96 | 39.37 | 40.50 |





Standart Nozzle 1" - 10133S



Precision engineered and manufactured of wear-resistant tempered steel, each Standard Nozzle includes one forward jet and blind plug (interchangeable). Jet angle is 23 degree. The Standard Cleaning Nozzle is light, maneuverable and highly efficient.

Technical Specifications:

- Replaceable, threaded stainless steel nozzle inserts
- Optional front jet
- Capable of being used with recycled water
- Rear water jet angle 23°

| Code | Description | | | | | | |
|----------------|-------------|------|--------------------------|------|-----------|--------|--------------|
| | Length | Ø | Inserts | Jets | Pipe Ø | Weight | Flow - p/min |
| 28-275-000 SV | 80mm | 60mm | R: 8x M6 ISK / FJ M6 ISK | 23° | 150-275mm | 0.90kg | 260 |
| 28-275-001 CAP | 80mm | 60mm | R: 8x M6 ISK / FJ M6 ISK | 23° | 150-275mm | 0.90kg | 330 |
| 28-275-002 KK | 80mm | 60mm | R: 8x M6 ISK / FJ M6 ISK | 23° | 150-275mm | 0.90kg | 400 |

Flounder Nozzle 3/4"-1" - 10331S



Precision engineered and manufactured of wear-resistant tempered steel, the Flounder nozzle is an excellent tool to clean the floor of pipes. The smooth design with rounded corners and edges provide the nozzle with a great gliding capability.

Technical Specifications:

- Replaceable, threaded stainless steel nozzle inserts
- Water jet angles 0°/8°/20°
- 3/4" hose connection (standard)
- 1" hose connection (possible with bushing available in Accessories)

| Code | Description | | | | | |
|----------------|------------------------|-----------|-----------|-----------|--------|--------------|
| | Length x Width x Hight | Inserts | Jets | Pipe Ø | Weight | Flow - p/min |
| 28-275-010 SV | 190 x 100 x 50 mm | 6x M8 ASK | 0°/8°/20° | 300-600mm | 5.20kg | 260 |
| 28-275-011 CAP | 190 x 100 x 50 mm | 6x M8 ASK | 0°/8°/20° | 300-600mm | 5.20kg | 330 |
| 28-275-012 KK | 190 x 100 x 50 mm | 6x M8 ASK | 0°/8°/20° | 300-600mm | 5.20kg | 400 |

General Nozzle 1" - 10182S



Precision engineered and manufactured of wear-resistant tempered steel with one forward jet and blind plug (interchangeable) included, the General is a perfect nozzle for preventative maintenance and all-around sewer cleaning. Two different water jet angles - 15 and 25 degrees - (four jets each) provide strong traction and highly efficient cleaning.

Technical Specifications:

- Optimized Hydro Mechanics
- Replaceable, threaded stainless steel nozzle inserts
- Rear water jet angles 15° and 25°
- 3/4" and 1 1/4" bushings available in accessories
- Capable of being used with recycled water

| Code | Description | | | | | | |
|----------------|-------------|------|--------------------------------|---------|-----------|--------|--------------|
| | Length | Ø | Inserts | Jets | Pipe Ø | Weight | Flow - p/min |
| 28-275-020 SV | 150mm | 80mm | R: 8x M10x1 ASK / FJ M10x1 ISK | 15°/25° | 150-400mm | 4.10kg | 260 |
| 28-275-021 CAP | 150mm | 80mm | R: 8x M10x1 ASK / FJ M10x1 ISK | 15°/25° | 150-400mm | 4.10kg | 330 |
| 28-275-022 KK | 150mm | 80mm | R: 8x M10x1 ASK / FJ M10x1 ISK | 15°/25° | 150-400mm | 4.10kg | 400 |

Power Pull Nozzle 1" - 10163S



Precision engineered and manufactured of wear-resistant tempered steel, the Power Pull Nozzle is an ideal tool for some of the toughest applications. The narrow, single 7 degree jet angle provides tremendous traction and cleaning performance in mountainous, difficult terrain. Great nozzle to clean and remove sand, silt and large debris from sewer lines.

Technical Specifications:

- Optimized Hydro Mechanics
- Replaceable, threaded stainless steel nozzle inserts
- Rear water jet angle 7°
- Capable of being used with recycled water

| Code | Description | | | | | | |
|----------------|-------------|------|--------------|------|-----------|--------|--------------|
| | Length | Ø | Inserts | Jets | Pipe Ø | Weight | Flow - p/min |
| 28-275-030 SV | 150mm | 80mm | 8x M10x1 ASK | 7° | 150-400mm | 4.10kg | 260 |
| 28-275-031 CAP | 150mm | 80mm | 8x M10x1 ASK | 7° | 150-400mm | 4.10kg | 330 |
| 28-275-032 KK | 150mm | 80mm | 8x M10x1 ASK | 7° | 150-400mm | 4.10kg | 400 |



Penetrator Nozzle 1" - 10121S

Precision engineered and manufactured of wear-resistant tempered steel, the Penetrator Nozzle has a specific design to successfully navigate over small voids in the pipe. The narrow, single 12 degree water jet angle provides tremendous traction and cleaning performance. Each Super Penetrator comes with one forward jet insert and blind plug (interchangeable). Upon request, a pulling eye is available as well.

Technical Specifications:

- Optimized Hydro Mechanics
- Replaceable, threaded stainless steel nozzle inserts
- Optional front jet
- 3/4" – 1 1/4" hose connection (with bushings available in accessories)
- Capable of being used with recycled water

| Code | Description | | | | | | |
|----------------|-------------|------|--------------------------------|---------|-----------|--------|--------------|
| | Length | Ø | Inserts | Jets | Pipe Ø | Weight | Flow - p/min |
| 28-275-040 SV | 200mm | 80mm | R: 8x M10x1 ASK / FJ M10x1 ASK | 15°/25° | 150-400mm | 7.00kg | 260 |
| 28-275-041 CAP | 200mm | 80mm | R: 8x M10x1 ASK / FJ M10x1 ASK | 15°/25° | 150-400mm | 7.00kg | 330 |
| 28-275-042 KK | 200mm | 80mm | R: 8x M10x1 ASK / FJ M10x1 ASK | 15°/25° | 150-400mm | 7.00kg | 400 |

Arrow Nozzle 1" DP - 10212S-DP



Precision engineered and manufactured of wear-resistant tempered steel, the Arrow Nozzles provide excellent performance in the most difficult cleaning application, by totally cutting and breaking through total obstructions in no time with its four very strong, concentrated forward jets and sharp cutting edges. Comes equipped with a Drill Point.

Technical Specifications:

- Replaceable, threaded stainless steel nozzle inserts
- Rear water jet angle 23°
- Forward water jet angle 0°
- Front water jet angle 15°
- 3/4" – 1 1/4" hose connection (with bushings available in accessories)
- Capable of being used with recycled water

| Code | Description | | | | | | |
|----------------|-------------|------|--|------------|-----------|--------|--------------|
| | Length | Ø | Inserts | Jets | Pipe Ø | Weight | Flow - p/min |
| 28-275-050 SV | 140mm | 62mm | R: 8x M8 ASK / FJ 3x M8 ASK / 0° M10x1 ASK | 0°/15°/23° | 150-400mm | 1.00kg | 260 |
| 28-275-051 CAP | 140mm | 62mm | R: 8x M8 ASK / FJ 3x M8 ASK / 0° M10x1 ASK | 0°/15°/23° | 150-400mm | 1.00kg | 330 |
| 28-275-052 KK | 140mm | 62mm | R: 8x M8 ASK / FJ 3x M8 ASK / 0° M10x1 ASK | 0°/15°/23° | 150-400mm | 1.00kg | 400 |



Anti Blower Nozzle 1" - 0362S

Precision engineered and manufactured of wear resistant tempered steel, the specially designed water jet angle in conjunction with reduced pressure eliminates effectively the blowing of toilets.

Technical Specifications:

- Optimized Hydro Mechanics
- Replaceable, threaded stainless steel nozzle inserts
- Water jet angle 36°
- 3/4" – 1 1/4" hose connection (with bushings available in accessories)

| Code | Description | | | | | | |
|----------------|-------------|------|--------------------------------|------|-----------|--------|--------------|
| | Length | Ø | Inserts | Jets | Pipe Ø | Weight | Flow - p/min |
| 28-275-060 SV | 150mm | 80mm | R: 8x M10x1 ASK / FJ M10x1 ISK | 36° | 150-400mm | 4.00kg | 260 |
| 28-275-061 CAP | 150mm | 80mm | R: 8x M10x1 ASK / FJ M10x1 ISK | 36° | 150-400mm | 4.00kg | 330 |
| 28-275-062 KK | 150mm | 80mm | R: 8x M10x1 ASK / FJ M10x1 ISK | 36° | 150-400mm | 4.00kg | 400 |



Power Pull Nozzle LRG 1" - 10166S10166S

Precision engineered and manufactured of wear-resistant tempered steel, the Power Pull Nozzle is an ideal tool for some of the toughest applications.

The narrow, single 7 degree jet angle provides tremendous traction and cleaning performance in mountainous, difficult terrain. Great nozzle to clean and remove sand, silt and large debris from sewer lines.

Technical Specifications:

- Optimized Hydro Mechanics
- Replaceable, threaded stainless steel nozzle inserts
- Rear water jet angle 7°
- Capable of being used with recycled water

| Code | Description | | | | | | |
|----------------|-------------|-------|-------------|------|-----------|--------|--------------|
| | Length | Ø | Inserts | Jets | Pipe Ø | Weight | Flow - p/min |
| 28-275-070 SV | 190mm | 100mm | 8x SW14 ASK | 7° | 200-600mm | 7.70kg | 260 |
| 28-275-071 CAP | 190mm | 100mm | 8x SW14 ASK | 7° | 200-600mm | 7.70kg | 330 |
| 28-275-072 KK | 190mm | 100mm | 8x SW14 ASK | 7° | 200-600mm | 7.70kg | 400 |



Spear Nozzle 1"- 10220S

Precision engineered and manufactured of wear-resistant tempered steel, the Spear Nozzle is a bigger, heavier version of the Chisel Nozzles to cut, break and remove total blockages in no time with its 5 very strong concentrated forward jets, drill point and sharp edges in larger pipes.

Technical Specifications:

- Heavy duty construction
- Drill point can be replaced with additional nozzle insert
- Replaceable, threaded stainless steel nozzle inserts
- Rear water jet angle 23°
- Front water jet angle 15°
- 1 1/4" hose connection (with bushings available in accessories)
- Capable of being used with recycled water

| Code | Description | | | | | | |
|----------------|-------------|------|--|------------|-----------|--------|--------------|
| | Length | Ø | Inserts | Jets | Pipe Ø | Weight | Flow - p/min |
| 28-275-080 SV | 190mm | 74mm | R: 6x SW14 ASK / FJ 4x M8 ASK / 0° M10x1 ASK | 0°/15°/23° | 200-600mm | 2.80kg | 260 |
| 28-275-081 CAP | 190mm | 74mm | R: 6x SW14 ASK / FJ 4x M8 ASK / 0° M10x1 ASK | 0°/15°/23° | 200-600mm | 2.80kg | 330 |
| 28-275-082 KK | 190mm | 74mm | R: 6x SW14 ASK / FJ 4x M8 ASK / 0° M10x1 ASK | 0°/15°/23° | 200-600mm | 2.80kg | 400 |



Stealth Nozzle 1" - 10101S

Precision engineered and manufactured of wear-resistant tempered steel. The Stealth's two different jet angles of 12 and 18 degrees (four jets each) provide powerful traction and effective cleaning performance to remove sand, silt and obstruction from sewer- or stormlines.

Technical Specifications:

- Optimized Hydro Mechanics
- Replaceable, threaded stainless steel nozzle inserts
- Capable of being used with recycled water
- Rear water jet angles 12° and 18°
- 1 1/4" hose connection (with bushings available in accessories)

| Code | Description | | | | | | |
|----------------|-------------|-------|-------------|---------|-----------|--------|--------------|
| | Length | Ø | Inserts | Jets | Pipe Ø | Weight | Flow - p/min |
| 28-275-090 SV | 190mm | 100mm | 8x SW14 ASK | 12°/18° | 200-600mm | 8.00kg | 260 |
| 28-275-091 CAP | 190mm | 100mm | 8x SW14 ASK | 12°/18° | 200-600mm | 8.00kg | 330 |
| 28-275-092 KK | 190mm | 100mm | 8x SW14 ASK | 12°/18° | 200-600mm | 8.00kg | 400 |



Emperor Nozzle 1" - 10110S

Precision engineered and manufactured of wear resistant tempered steel. The Emperor's two different water jet angles of 15 and 30 degrees (six jets each) provide highly effective cleaning performance and traction in large sewer- and stormlines.

Technical Specifications:

- Optimized Hydro Mechanics
- Replaceable, threaded stainless steel nozzle inserts
- Heavy design for large pipes
- Capable of being used with recycled water
- Water jet angles 15° and 30°
- 1 1/4" hose connection (with bushing available in accessories)

| Code | Description | | | | | | |
|----------------|-------------|-------|--------------|---------|-----------|--------|--------------|
| | Length | Ø | Inserts | Jets | Pipe Ø | Weight | Flow - p/min |
| 28-275-100 SV | 190mm | 110mm | 12x SW14 ASK | 15°/30° | 300-800mm | 9.00kg | 260 |
| 28-275-101 CAP | 190mm | 110mm | 12x SW14 ASK | 15°/30° | 300-800mm | 9.00kg | 330 |
| 28-275-102 KK | 190mm | 110mm | 12x SW14 ASK | 15°/30° | 300-800mm | 9.00kg | 400 |





NOTE

[illegible]

Powell Industrial Product Range

HOSES

- Rubber
- PVC Pressure
- PVC Suction
- Layflat
- Ducting
- Composite

FITTINGS

- Camlocks
- Hose Tails
- Couplings
- Clamps
- Valves
- Brass Screwed
- Pipe Fittings
- Stainless Steel Screwed
- Polypropylene/Nylon
- Guns & Nozzles

PNEUMATICS

- Pneumatic Tube & Air Pipe
- Pneumatic Push-In
- Pneumatic Quick Couplings
- Pneumatic Accessories

HOSE REELS

- Manual & Automatic Rewind

RUBBER

- Insertion Rubber
- Rubber Sheet
- Matting

HYDRAULICS

- Hydraulic Hoses
- Hydraulic Hose Tails
- Hydraulic Adaptors
- Hydraulic Quick Couplings
- Hydraulic Accessories

ACCESSORIES & CONSUMABLES

- Spill Control
- Thread Tapes, Adhesives, Pastes & Sealants
- Hose Protectors
- Mesh

For more detailed information on the individual products associated with each category and sub-group listed above, along with all the great industrial brands you can find at Powell Industrial, please contact your local branch for assistance or visit our website www.powellindustrial.com.au

Contact details for each branch are located below.

Powell Industrial Branches

Coopers Plains
phone 07 3722 3722
fax 07 3722 3733
Unit 1, 76 Postle Street
Coopers Plains QLD 4108
brissales@powellindustrial.com.au

Newcastle
phone 02 4918 5400
fax 02 4028 6835
Unit 6, 26 Balook Drive
Beresfield NSW 2322
newsales@powellindustrial.com.au

Derrimut
phone 03 8353 2835
fax 03 8353 2879
Unit 1, 2 Derrimut Drive
Derrimut VIC 3030
derrimut@powellindustrial.com.au

Geebung
phone 07 3722 3722
fax 07 3722 3733
238 Robinson Road
Geebung QLD 4034
brissales@powellindustrial.com.au

Wetherill Park
phone 02 8786 7200
fax 02 9756 1534
6 Nello Place
Wetherill Park NSW 2164
sydsales@powellindustrial.com.au

Hobart
phone 03 6242 4700
fax 03 6272 1485
8A Lampton Avenue,
Derwent Park TAS 7009
hobart@powellindustrial.com.au

Mackay
phone 07 4952 1666
fax 07 4952 1133
Unit 2, 3 Ginger Street
Mackay QLD 4740
msales@powellindustrial.com.au

Kilsyth
phone 03 9753 8400
fax 03 9761 7456
Unit 3, 120 Canterbury Road
Kilsyth South VIC 3137
melsales@powellindustrial.com.au

Welshpool
phone 08 9251 2900
fax 08 9358 5911
Unit 2, 512 Abernethy Road
Kewdale WA 6105
welshpool@powellindustrial.com.au

Townsville
phone 07 4775 4855
fax 07 4775 4766
76 Leyland Street
Garbutt QLD 4814
tsales@powellindustrial.com.au

Braeside
phone 03 8544 5800
Fax: 03 9588 1441
Factory 1, 252 Governor Road
Braeside VIC 3195
melsales@powellindustrial.com.au